

## CRYOGENIC RECIPROCATING PUMPS

**VT-3 SERIES**

FOR LIQUEFIED NATURAL GAS (LNG)

**TECHNICAL FEATURES**

- Compatible with Cold Converter and Thermosyphon storage tanks
- Modular assembly (from Simplex to Triplex)
- High efficiency
- Low operating noise
- Quick maintenance thanks to the integrated cartridge seal system

**APPLICATIONS**

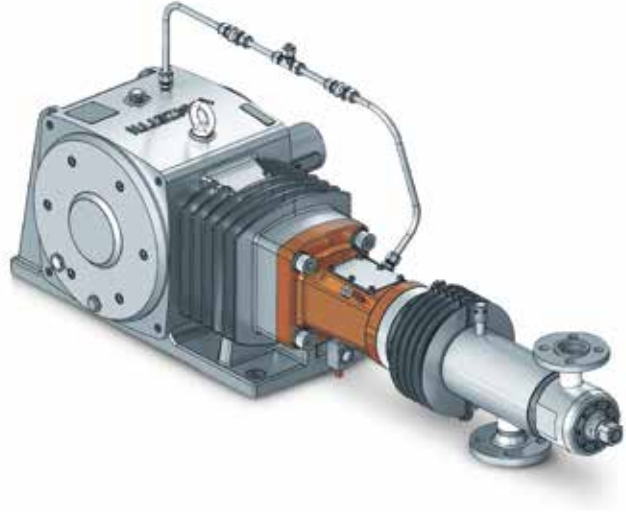
- Big sized L-CNG refueling stations for cars/trucks/buses, mother stations, tube trailer filling

**CRANKDRIVE SYSTEM**

- TW 10 – Oil Lubrication

**TRANSFERRED FLUIDS**

- LNG

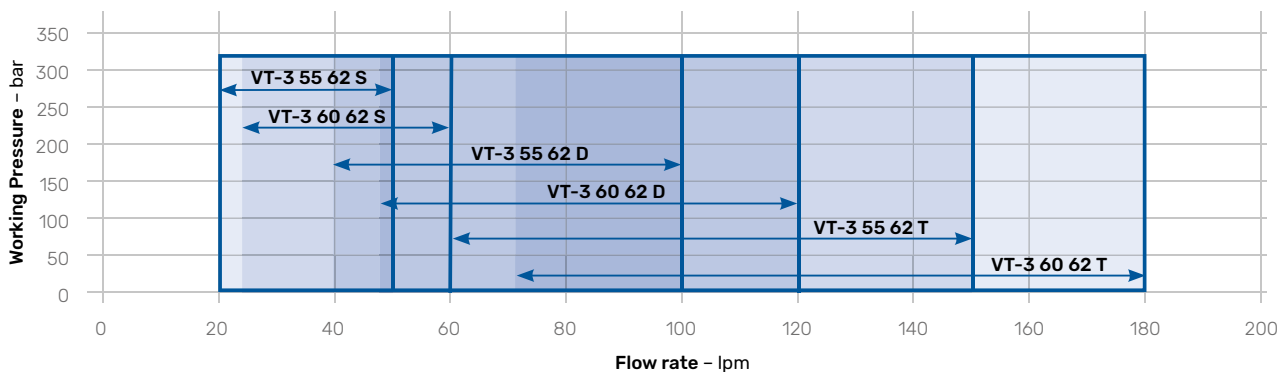
**VT-3 TW 10 PERFORMANCES**

| Model               | Piston |        | Flow-rate    |      |             |      | Maximum allowable suction pressure (MASP) |     | Maximum allowable working pressure (MAWP) |      | Power installed  |
|---------------------|--------|--------|--------------|------|-------------|------|---|-----|---|------|------------------|
|                     | Bore   | Stroke | Min 150 rpm* |      | Max 380 rpm |      |   |     |   |      | Referred to MAWP |
| Series pump         | mm     | mm     | lpm          | gpm  | lpm         | gpm  | bar                                       | psi | bar                                       | psi  | kW               |
| <b>VT-3 55 62 S</b> | 55     | 62     | 20           | 5,3  | 50          | 13,2 | 20  | 290 | 320                                       | 4641 | 30 - 75          |
| <b>VT-3 55 62 D</b> | 55     | 62     | 40           | 10,6 | 100         | 26,4 | 20  | 290 | 320                                       | 4641 | 37 - 90          |
| <b>VT-3 55 62 T</b> | 55     | 62     | 60           | 15,9 | 150         | 39,6 | 20  | 290 | 320                                       | 4641 | 45 - 110         |
| <b>VT-3 60 62 S</b> | 60     | 62     | 23,7         | 6,3  | 60          | 15,9 | 20  | 290 | 320                                       | 4641 | 30 - 75          |
| <b>VT-3 60 62 D</b> | 60     | 62     | 47,3         | 12,5 | 120         | 31,7 | 20  | 290 | 320                                       | 4641 | 45 - 110         |
| <b>VT-3 60 62 T</b> | 60     | 62     | 71,0         | 18,8 | 180         | 47,6 | 20  | 290 | 320                                       | 4641 | 55 - 132         |

\*Flow-rate can be reduced by forced oil lubrication system

NPSH required: 1,5 - 1,7 m

Data can be subjected to change



**STANDARD SUPPLY**

- Painted steel frame
- Cryogenic pump
- Electric motor
- Transmission by belt and pulleys or gearbox and couplings
- Double pulsation damper

**STANDARD ACCESSORIES**

- Suction flexible hose
- Return flexible hose
- Low pressure safety valve
- High pressure safety valve
- Check valve
- Pressure gauge
- Pressure switch
- Temperature sensor for cool down
- Temperature sensor for cavitation
- Temperature sensor for leaks detection
- Junction box

**OPTIONAL ACCESSORIES**

- Flushing system with nitrogen gas
- Forced oil lubrication system
- High pressure pneumatic valve for venting
- Motor suitable for VFD
- Complete automatic system available on demand

Average SKID weight: 1600 kg

Package overall dimensions: 295 x 118 x 154 cm

**TEST AND CHECKS**

- Dimensional control of each mechanical component before assembly
- Performance test with LIN available for class and customer

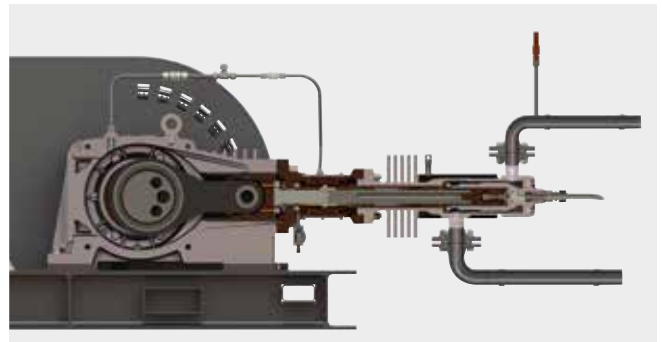
**STANDARDS**

Designed according to:

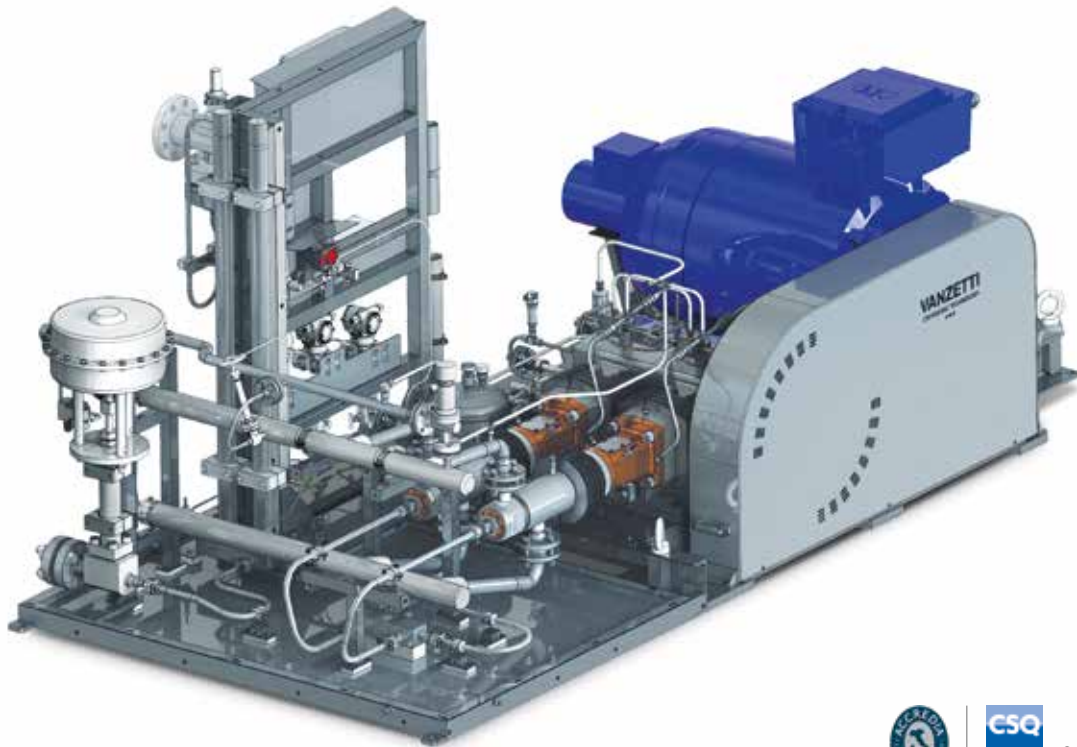
- European Directive Machinery
- European Directive ATEX
- European Directive PED
- EIGA/IGC/CGA guidelines



II 2G Ex h IIB/IIC T4 Gb



Pump skid section



Certified quality management system