

## CRYOGENIC RECIPROCATING PUMPS

**VT-3 SERIES**

FOR LIQUEFIED NATURAL GAS (LNG)

**TECHNICAL FEATURES**

- Available with gearbox or belt-pulley configuration
- Modular assembly (from Simplex to Triplex)
- High efficiency
- Low operating noise
- Quick maintenance thanks to the integrated cartridge seal system
- Motor suitable for inverter/VFD use

**APPLICATIONS**

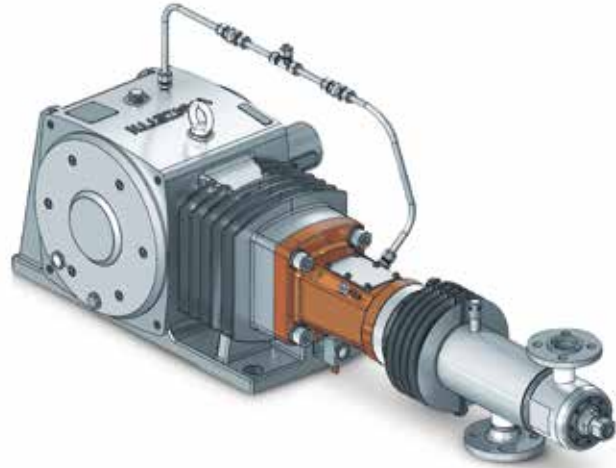
- High pressure marine engines Fuel Gas Systems

**CRANKDRIVE SYSTEM**

- TW 10 – Oil Lubrication

**TRANSFERRED FLUIDS**

- LNG

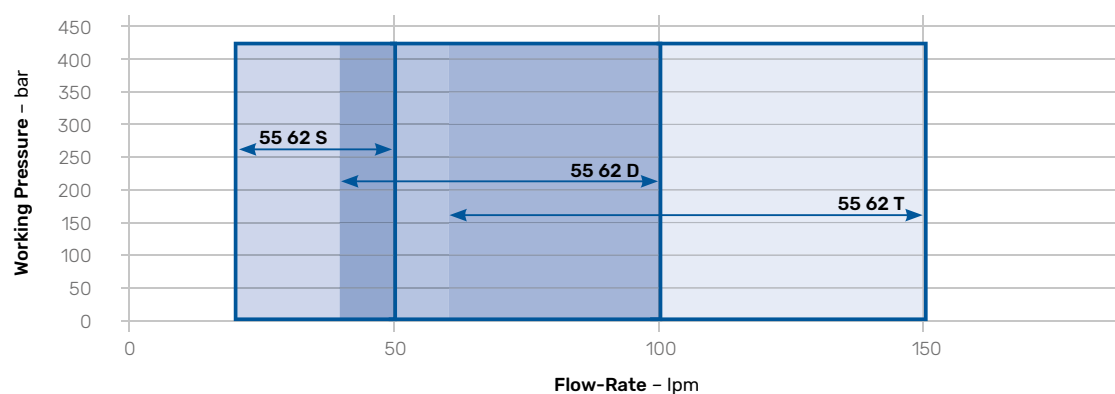
**VT-3 TW 10 PERFORMANCES**

Model	Piston		Flow-rate				Maximum allowable suction pressure (MASP)		Maximum allowable working pressure (MAWP)		Power installed
	Bore	Stroke	Min 150 rpm*		Max 380 rpm						Referred to MAWP
Series pump	mm	mm	lpm	gpm	lpm	gpm	bar	psi	bar	psi	kW
<b>VT-3 55 62 S</b>	55	62	20	5,3	50	13,2	20	290	420	6092	37 – 90
<b>VT-3 55 62 D</b>	55	62	40	10,6	100	26,4	20	290	420	6092	45 – 110
<b>VT-3 55 62 T</b>	55	62	60	15,9	150	39,6	20	290	420	6092	75 – 160

\*Flow-rate can be reduced by forced oil lubrication system

NPSH required: 1,5 – 1,7 m

Data can be subjected to change



**STANDARD SUPPLY**

- Painted steel frame
- Cryogenic pump
- Electric motor suitable for VFD
- Transmission by belt and pulleys or gearbox and couplings
- Double pulsation damper

**STANDARD ACCESSORIES**

- Suction flexible hose
- Return flexible hose
- Low pressure safety valve
- High pressure safety valve
- Check valve
- Pressure gauge
- Pressure switch
- Temperature sensor for cool down
- Temperature sensor for cavitation
- Temperature sensor for leaks detection
- Junction box

**OPTIONAL**

- Flushing system with nitrogen gas
- Forced oil lubrication system
- High pressure pneumatic valve for venting

**TEST AND CHECKS**

- Dimensional control of each mechanical component before assembly
- Performance test with LIN available for class and customer

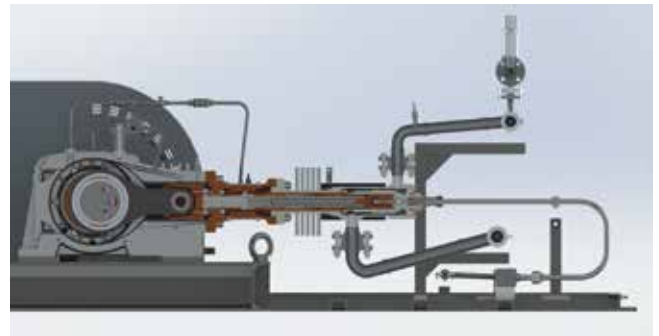
**STANDARDS**

Designed according to:

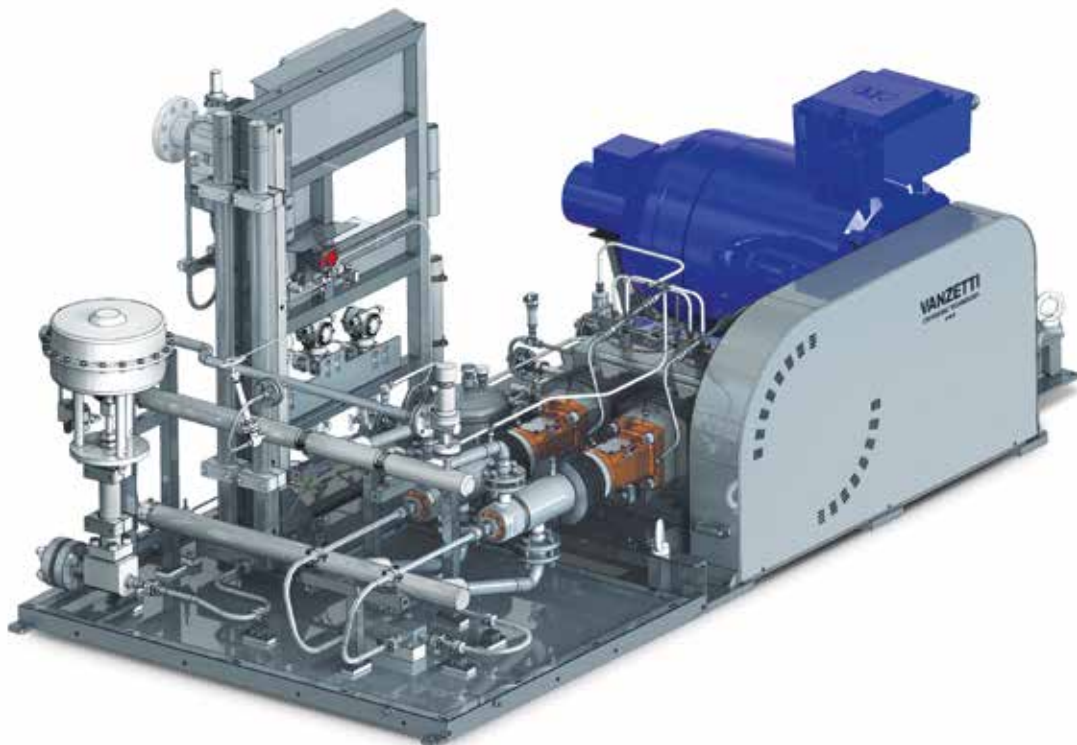
- European Directive Machinery
- European Directive ATEX
- European Directive PED
- IIG/IGC/CGA guidelines
- Marine Certifications available on request



II 2G Ex h IIB/IIC T4 Gb



Pump skid section



Certified quality  
management system